



OPERATORS MANUAL / OPERATEURSHANDLEIDING

# Limespreader / Kalkstrooier



**CONTENTS**

FOREWORD	1
COMPANY PROFILE	2
WARRANTY AND DISCLAIMER	3
PRODUCT RANGE	5
INSTALLATION	6
OPERATION	7
MAINTENANCE	10
PARTS LISTS	13

**INHOUD**

VOORWOORD
MAATSKAPPYPROFIEL
WAARBORG EN VRYWARING
PRODUKREEKS
INSTALLERING
WERKING
INSTANDHOUDING
PARTELYSTE

Authorised Dealer / Gemagtigde handelaar:

Date of Sale / Verkoopsdatum:

Implement:

Model No. / Model Nr.:

Serial No. / Reeks Nr.:

Part number

M8407

Onderdeelnummer

Version

1

Weergawe

Date of publication

2019/03/22

Datum van publisering

## FOREWORD

## VOORWOORD

We at Falcon commend and congratulate you on the purchase of your Falcon implement, which we consider to be the best of its type available.

However, we would like to remind you that your success and satisfaction with the product will be greatly improved by you familiarising yourself with the contents of this manual. It contains important information relevant to the responsible operation, maintenance and most importantly, safe use of the product.

Note that failure to observe or comply with the provisions of this manual may result in unsafe operating conditions as well as damage to products and property which shall not be covered under warranty.

Should this manual become misplaced, damaged or destroyed, further copies are available from your Falcon dealer. Alternatively, this document is available for download from our website: [www.falconequipment.co.za](http://www.falconequipment.co.za)

### Symbols used in this document



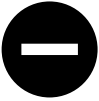
Ons by Falcon wens jou geluk met die aankoop van jou Falcon-implement, wat ons as die beste beskikbare werktuig in sy soort beskou.

Ons herinner u egter graag daaraan dat u sukses en tevredenheid met die produk grootliks verbeter sal word as u met die inhoud van hierdie handleiding vertrou raak. Dit bevat belangrike inligting met betrekking tot die verantwoordelike gebruik, instandhouding en, die heel belangrikste, veilige gebruik van die produk.

Let asseblief op dat versuim om die bepalings van hierdie handleiding na te kom tot onveilige bedryfstoelestande asook skade aan produkte en eiendom kan lei wat nie onder die waarborg gedek sal wees nie.

Indien hierdie handleiding dalk verloor, beskadig of vernietig sou word, is daar verdere kopieë by u Falcon-handelaar beskikbaar. Hierdie dokument kan ook van ons webwerf, [www.falconequipment.co.za](http://www.falconequipment.co.za), afgelaai word.

### Simbole wat in hierdie dokument gebruik word

	<b>Safety-critical notices</b>	Failure to comply with these notices may result in serious damage to equipment, personal injury or death.
	<b>Veiligheidskritieke kennisgewings</b>	Versuim om aan hierdie kennisgewings gehoor te gee kan ernstige skade aan toerusting, persoonlike beserings of dood tot gevolg hê.
	<b>Procedures and checks</b>	To be carried out by suitably competent persons in the course of installation, operation and maintenance of the equipment.
	<b>Prosedures en kontroles</b>	Moet deur toepaslik bekwame persone uitgevoer word by die installering, bedryf en instandhouding van die toerusting.
	<b>General information</b>	Information provided for references purposes, including any external references intended to be read in conjunction with this manual.
	<b>Algemene inligting</b>	Inligting vir verwysingsdoeleindes, insluitend enige eksterne verwysings wat bedoel is om saam met hierdie handleiding gelees te word.

## COMPANY PROFILE

## MAATSKAPPYPROFIEL

Falcon Agricultural Equipment (Pty) Ltd is the largest manufacturer of rotary cutters in Africa. The company opened its doors in 1985, at its current premises in Howick, Kwazulu-Natal, South Africa. This is the ideal location as it is an agricultural area with a leading agricultural college nearby.

Our primary market is the agricultural sector, with niche efforts into the industrial and turf implement markets. We distribute our products through a network of over 250 authorised dealers and approximately 110 dedicated mechanisation dealers countrywide. We also distribute our products across our borders into other African countries such as Botswana, Kenya, Malawi, Mozambique, Namibia, Uganda, Swaziland, Tanzania, Zambia, and Zimbabwe.

We manufacture the Falcon range of implements, and our ongoing program of innovation and improvement ensures that we consistently launch implements to satisfy our customers' ever-changing needs.

The Falcon range includes slashers, Haymakers®, material handling implements, mulchers, mowers, spreaders, rotavators, and flail implements. Each is designed to be simple, safe, and serviceable while offering excellent value for money. They are built to last and are capable of coping with the tough South African conditions.

In many parts of South Africa "Falcon" is the generic term for grass-cutting implements, making us the undisputed leader in our field. Delivery on a marketing promise is the foundation of any successful marketing drive and farmers buying the Falcon brand buy more than just a product - they buy the heritage and expertise of a company that has been around for a long time!

We also import a range of implements that complement the locally manufactured ones. These include the Amazone spreaders, sprayers, mowers, and soil tillage implements (from Germany).

Falcon Agricultural Equipment (Pty) Ltd is committed to supporting our local communities in many different ways. Our main focus is the well-being of children and we provide a safe and suitable school environment for them, as well as school-related necessities.

Our team prides itself on its professional approach to business. We have built long-standing relationships with our dealers and their customers based on honesty, trust, respect, and integrity. Excellent customer service is an important part of the Falcon promise.

Falcon Agricultural Equipment (Edms.) Bpk. is die grootste vervaardiger van wentelsnyers in Afrika. Die maatskappy het sy deure in 1985 by sy huidige perseel in Howick, KwaZulu-Natal, Suid-Afrika, geopen. Die ligging is ideaal: in 'n boerderygebied met 'n vooraanstaande landboukollege naby.

Ons hoofmark is die landbousektor, met nisverkope in die nywerheids- en grasbaanimplement-markte. Ons versprei ons produkte deur 'n netwerk van meer as 250 gemagtigde handelaars met ongeveer 110 toegewyde meganisasiehandelaars landswyd. Ons versprei ook ons produkte oor ons grense na ander Afrikalande soos Botswana, Kenia, Malawi, Mosambiek, Namibië, Uganda, Swaziland, Tanzanië, Zambië, en Zimbabwe.

Ons vervaardig die Falcon-implementreeks en ons voortgesette program van vernuwing en verbetering verseker dat ons konstant implemente bekendstel wat ons kliënte se immer veranderende behoeftes bevredig.

Die Falcon-reeks sluit wentelsnyers, Hooimakers®, materiaalhanteringsimplemente, mulchers, grassnyers, strooiers, kapploë en vleëlimplemente in. Almal is ontwerp om eenvoudig, veilig en diensbaar te wees terwyl hulle uitstekende waarde vir geld bied. Hulle is gebou om te hou en ons strawwe Suid-Afrikaanse toestande die hoof te bied.

In baie dele van Suid-Afrika is "Falcon" die generiese term vir grassny-implemente, wat ons die onbetwiste leier op ons gebied maak. Die nakom van 'n bemarkingsbelofte is die grondslag van enige geslaagde bemarkingsveldtog, en boere wat die Falcon-handelsmerk koop, koop meer as net 'n produk – hulle koop die erfenis en deskundigheid van 'n maatskappy wat al lank in die land is!

Ons voer ook 'n reeks implemente in wat die plaaslik-vervaardigdes komplementeer. Dit sluit in die Amazone-strooiers, -spuite, -grassnyers en -grondbewerkings-implemente (uit Duitsland).

Falcon Agricultural Equipment (Edms.) Bpk. is verbonde tot die ondersteuning van ons plaaslike gemeenskappe op baie verskillende maniere. Ons hooffokus is die welsyn van kinders, en ons verskaf vir hulle 'n veilige en geskikte skoolomgewing, sowel as skoolverwante benodigdhede.

Ons span is trots op sy professionele benadering tot besigheid. Ons het langdurige verhoudings met ons handelaars en hul klante opgebou wat op eerlikheid, vertroue, respek en integriteit gebaseer is. Voortreflike klantediens is 'n belangrike deel van die Falcon-belofte.

## WARRANTY AND DISCLAIMER

Falcon products are manufactured in accordance with established quality standards and are accompanied by a limited warranty against defective materials and workmanship. In terms of this warranty, Falcon or an authorised Dealer may conduct reasonable repairs or replacement of products or parts of products, as required.

### General conditions of limited warranty

Any claim with respect to warranty shall satisfy the following minimum conditions.

- The implement has not been subjected to misuse, abuse, damage or acts of negligence.
- The Owner is in possession of, and can demonstrate an understanding and application of the provisions of this manual.
- The implement has been used exclusively for its intended purpose and in a configuration in which it was designed to operate.
- Installation, setup, operation and maintenance of the implement have been carried out in accordance with this manual.
- Maintenance of the implement has been carried out as prescribed in this manual, using original and approved parts.
- The implement has not been subjected to structural, mechanical or any other unauthorised modification or repair.
- A warranty claim has been reported to an authorised Dealer within the prescribed warranty period for the product concerned.

### Exclusions

The following items are excluded from warranty cover, including any costs relating to these.

- Parts reckoned as consumable or wearing parts.
- Products or parts of products exhibiting acceptable wear and tear.
- Temporary replacement, loan or hire of substitute parts or equipment.
- Transport and handling of affected products.
- Consequential damage or loss on the part of any person, organization or otherwise affected party.

### Validity

This warranty supersedes all previous conditions of warranty, whether expressed or implied, including any previous obligation or liability on the part of Falcon in respect of non-conforming or defective product.

### Disclaimer

Falcon maintains a programme of continuous product improvement and consequently reserves the right to change designs, specifications, descriptions and materials

## WAARBORG EN VRYWARING

Falcon-produkte word vervaardig ooreenkomstig met gevestigde gehalte-standaarde en word deur 'n beperkte waarborg teen defektiewe materiale en vakmanskap gedek. Kragtens hierdie waarborg mag Falcon of 'n gemagtigde Handelaar redelike herstelwerk of vervanging van produkte of produkonderdele uitvoer, soos vereis.

### Algemene voorwaardes van beperkte waarborg

Enige eis ten opsigte van die waarborg moet aan die volgende minimumvoorwaardes voldoen:

- Die implement is nie aan verkeerde gebruik, misbruik, beskadiging of verwaarlosing onderwerp nie.
- Die Eienaar is in besit van hierdie handleiding en kan 'n begrip en toepassing van die bepalings daarvan demonstree.
- Die implement is uitsluitlik vir die bedoelde doel gebruik en in 'n konfigurasie waarin dit ontwerp is om bedryf te word.
- Installering, opstelling, bedryf en instandhouding van die implement het in ooreenstemming met hierdie handleiding plaasgevind.
- Instandhouding van die implement is uitgevoer soos in hierdie handleiding voorgeskryf, met gebruik van oorspronklike en goedgekeurde onderdele.
- Die implement is nie aan enige strukturele, meganiese of enige ander ongemagtigde wysiging of herstelwerk onderwerp nie.
- Kennis van 'n waarborg-eis is binne die voorgeskrewe waarborgtydperk vir die betrokke produk aan 'n gemagtigde Handelaar gegee.

### Uitsluitings

Die volgende items word van waarborgdekking uitgesluit, insluitend enige onkoste daaraan verbonde.

- Onderdele as verbruikbare of slytonderdele geag.
- Produkte of produkonderdele wat aanvaarbare slytasie vertoon.
- Tydelike vervanging, leen of huur van vervangingsonderdele of -toerusting.
- Vervoer en hantering van geaffekteerde produkte.
- Gevolglike skade of verlies aan of deur enige persoon, organisasie of andersins geaffekteerde party.

### Geldigheid

Hierdie waarborg vervang alle vorige waarborgvoorwaardes, hetsy eksplisiet of geïmpliseer, insluitend enige vorige verpligting of aanspreeklikheid van Falcon ten opsigte van nie-ooreenstemmende of defekte produkte.

### Vrywaring

Falcon handhaaf 'n program van voortdurende produkverbetering en gevolg behou ons die reg om ontwerpe, spesifikasies, beskrywings, materiale en enige ander

of construction and any other product attribute without prior notice. This includes no obligation to reflect such changes in documentation or literature or to provide any such changes to products previously sold or held in stock.

produkteienskap sonder voorafkennisgewing te wysig, insluitend geen verpligting om sulke veranderinge in dokumentasie of literatuur te weerspieël of aan te bring aan produkte wat voorheen verkoop of aangehou is nie.

#### Warranty Periods

Brands	Product groups	Components	Origin	Versions	Period	
Falcon	Slashers Haymakers® Rollermowers Blowermowers™	Gearboxes	Imported	All	2y	
			Falcon	F50	3y	
				F80	3y	
			PTO shafts	Imported	All	1y
		OEM parts	Falcon	All	2y	
	Dual-spindle Slashers Dual-spindle Haymakers® Flexwing Grassmulchers™ Fieldmulchers™ SD Mulchers Rotagang®	Gearboxes	Imported	All	1y	
				Falcon	F50	2y
			F60		1y	
			F80		2y	
			PTO shafts	Imported	All	1y
			OEM parts	Falcon	All	1y
	Flail implements	Gearboxes	Imported	All	1y	
		PTO shafts	Imported	All	1y	
		OEM parts	Falcon	All	1y	
	Rotavators	Gearboxes	Falcon	All	1y	
		OEM parts	Falcon	All	1y	
	Rotorspreaders	OEM parts	Falcon	All	1y	
PTO shafts		Imported	All	1y		
Limespreaders	OEM parts	Falcon	All	1y		
Bale forks + beams	OEM parts	Falcon	All	1y		
Unloaders®	OEM parts	Falcon	All	1y		
Bale Grab	OEM parts	Falcon	All	1y		
Amazone	Spreaders Sprayers Soil Tillage Turf equipment	All	Amazone	All	1y	

## PRODUCT RANGE

The Falcon range of Limespreaders consists of two “drop-spreading” models, intended for spreading agricultural lime and other varieties of similar granular materials. These implements feature a land-wheel-driven metering system and are available in trailed and 3-point hitch-mounted versions.

Available in two versions

- Fully trailed, with a capacity of 500 kg.
- 3-point hitch mounted, with a capacity of 400 kg.

Both versions feature a simple hand-lever-operated and adjustable discharge mechanism.

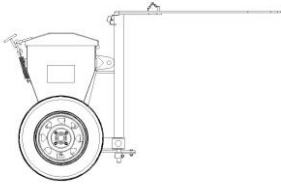
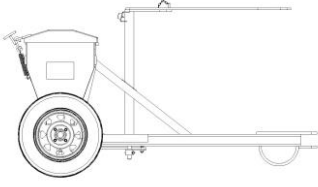
## PRODUKREEKS

Die Falcon-kalkstrooierreeks bestaan uit twee “valstrooi”-modelle wat ontwerp is om landboukalk en ‘n verskeidenheid soortgelyke korrelstowwe te strooi. Hierdie implemente is toegerus met ‘n grondwiel-aangedrewe uitmeetstelsel en is in gesleepte en 3-punt-haak gemonteerde weergawes beskikbaar.

In twee weergawes beskikbaar

- Ten volle gesleep; 500 kg-kapasiteit.
- 3-punt-haak-gemonteer; 400 kg-kapasiteit.

Albei weergawes beskik oor ‘n eenvoudige handhefboom- en verstelbare afvoermeganisme.

Profile	Model (Part no.)	Capacity (kg)	Working width (mm)	Discharge type	W x L x H (mm)			Mass (kg)	Power, max. (kW)
	F400 (A0064)	400	2 400	Bottom/ Onder	2875	1820	1120	380	N/A NVT
	F500 (A0065)	500	3 000	Bottom/ Onder	3475	2070	1120	480	N/A NVT
Profiel	Model (Onderdeelnr.)	Kapasiteit (kg)	Werkswydte (mm)	Afvoertipe	B x L x H (mm)			Massa (kg)	Krag, maks. (kW)

## INSTALLATION

### Attaching the implement to the tractor

- ⚠ Do not enter the area between the tractor and the implement unless the tractor engine is shut off, handbrake applied and the key is removed from the ignition.
- ⚠ Use only hitch pins and lynchpins of the correct specification, such as those provided with the implement.

#### ➤ F400 Model

The implement is equipped with a standard 3-point hitch for attachment to the tractor.

- ✔ Adjust the tractor 3-point hitch top link (Fig. 1-A) such that the implement is vertical when lowered to the working position.
- ✔ Lift the implement to an acceptable transportation height and operate the hitch offset facility to the extremities of its travel, ensuring that there is no contact between any part of the implement and the tractor.
- ✔ Adjust the tractor 3-point hitch stabiliser arms to prevent excessive lateral movement of the implement during transportation.
- ✔ Set the tractor hitch lift arms to a floating position to enable independent movement of the arms while working.

#### ➤ F500 Model

The implement is equipped with a clevis-type towing hitch intended for attachment only to a single-tab towing arm or a linkage drawbar.

- ✔ Adjust the tractor hitch height such that the implement drawbar assumes a horizontal position while working.
- ⊖ Towing the implement with the drawbar in an inclined position may lead to the implement's toppling backwards should it become detached from the tractor hitch, or during the hitching and unhitching processes.
- ⊖ Only a single-tab towing hitch (Fig. 2-A) should be used on the tractor to engage with the implement towing hitch. Failure to observe these requirements will result in damage to the implement hitch and other failures not covered under warranty.

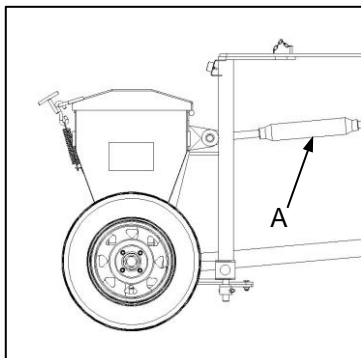


Fig. 1

## INSTALLERING

### Koppel van die implement aan die trekker

- ⚠ Moenie tussen die trekker en die implement inbeweeg tensy die trekkerenjyn afgeskakel, die handrem opgetrek en die sleutel uit die aansitter verwyder is nie.
- ⚠ Gebruik slegs haak- en lunspeen met die korrekte spesifikasies soos dié wat saam met die implement verskaf is.

#### ➤ F400 Model

Die implement is toegerus met 'n standaard-3-punt-haak vir aanhaak aan die trekker.

- ✔ Verstel die trekker se 3-punt-haak-boskamel (Fig. 1-A) só dat die implement vertikaal is wanneer dit na die werksposisie laat sak word.
- ✔ Lig die implement tot 'n aanvaarbare vervoerhoogte en beweeg die kontrahaakfasiliteit tussen sy uiterste posisies rond om te verseker dat daar geen kontak tussen enige deel van die implement en die trekker is nie.
- ✔ Verstel die trekker se 3-punt-haak-stabiliseerderarms om enige oormatige laterale beweging van die implement tydens vervoer te voorkom.
- ✔ Stel die trekkerhaakhysarms in 'n swewende posisie om onafhanklike beweging van die arms tydens bedryf moontlik te maak.

#### ➤ F500 Model

Die implement is toegerus met 'n vurktipe-sleephaak wat slegs vir koppeling aan 'n enkelliptrekstang of 'n koppel-trekstang bedoel is.

- ✔ Verstel die trekkerhaakhoogte só dat die implement se trekstang tydens bedryf horisontaal is.
- ⊖ Sleep van die implement met die trekstang nie horisontaal nie kan die implement laat agteroor kantel as dit loshaak, of tydens die aan- of afhaakprosesse.
- ⊖ Slegs 'n enkelliptrekstang (Fig. 2-A) moet aan die trekker gebruik word om die implement mee aan te haak. Versuim om hierdie vereistes na te kom sal lei tot skade aan die implementhaak en ander onklaarraking wat nie deur die waarborg gedek word nie.

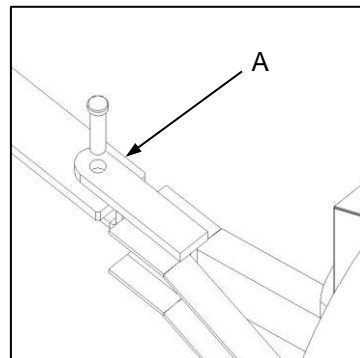


Fig. 2



## OPERATION

## BEDRYF

### General

It is the responsibility of the owner to ensure that the operation of an agricultural tractor and any attached equipment is carried out in accordance with all applicable laws, regulations and practices relating to safe and responsible operation.

- ⊖ Applicable regulations should include, but not be limited to, the South African Occupational Health and Safety Act No. 83 of 1993 and the South African National Road Traffic Act No. 93 of 1996.
- ⊖ Refer also to operational information relevant to the tractor concerned, including handbooks, operator manuals, safety and warning notices and decals.

### Preparation for use

- ⚠ Only suitably trained persons should operate the implement and no person should operate the implement without first studying and establishing a complete understanding of the content of this manual.

The implement must be thoroughly inspected and prepared before each use and with reference to procedures described elsewhere in this manual.

1. Attaching the implement to the tractor.
2. Settings and adjustment.
3. Lubrication and oil levels.
4. Routine maintenance (before and after each use).

Inspect the work area.

- ✔ Remove any movable obstructions from the work area, especially any object which may cause damage to the implement, including sharp objects likely to cause tyre punctures.
- ✔ Note the presence of ditches, holes, stumps, stones, rocks, or any other obstruction that might destabilise the tractor or cause damage to the implement. Remove these obstacles where possible, otherwise note and avoid these areas during spreading.

### Operating the implement

- ⚠ Never approach or allow any person to approach the implement unless the tractor engine is shut off, the handbrake applied and the implement has come to a complete stop.
- ⚠ Actively discourage spectators and cease operation of the implement if any person approaches or enters the work area.
- ⚠ Be sure to operate the implement at a conservative travel travelling speed.

### Algemeen

Dit is die verantwoordelikheid van die eienaar om te verseker dat die bedryf van 'n landboutrekker en enige gekoppelde toerusting uitgevoer word in ooreenstemming met alle toepaslike wette, regulasies en praktyke wat met veilige en verantwoordelike bediening te doen het.

- ⊖ Toepaslike regulasies sluit in, maar is nie beperk nie tot, die Suid-Afrikaanse Wet op Beroepsgesondheid en Veiligheid nr. 85 van 1993 en die Suid-Afrikaanse Wet op Nasionale Padverkeer nr. 93 van 1996.
- ⊖ Verwys ook na tersaaklike bedryfsinligting oor die betrokke trekker, insluitend handboeke, operateurs-handleidings, en veiligheid- en waarskuwingskennisgewings en -plakkers.

### Voorbereiding vir gebruik

- ⚠ Slegs toepaslik opgeleide persone moet die implement bedryf, en geen persoon moet dit bedryf sonder om eers die inhoud van hierdie handleiding te bestudeer en 'n volledige begrip daarvan te verkry nie.

Die implement moet telkens eers deeglik geïnspekteer en voorberei word voor dit gebruik word, en met verwysing na prosedures wat elders in hierdie handleiding beskryf word.

1. Koppeling van die implement aan die trekker.
2. Instellings en verstellings.
3. Smering en olievakke.
4. Roetine-instandhouding (voor en na elke gebruik).

Inspekteer die werksgebied.

- ✔ Verwyder enige los obstrukties van die werksgebied, veral enige voorwerp wat skade aan die implement kan aanrig, insluitend skerp voorwerpe wat bandlekke kan veroorsaak.
- ✔ Let op enige dongas, gate, stompe, klippe, rotse of enige ander obstruksie wat die trekker mag destabiliseer of die implement kan beskadig. Verwyder hierdie hindernisse waar moontlik, of anders moet hierdie gebiede gedurende toediening vermy word.

### Bedryf van die implement

- ⚠ Moet nooit na die implement beweeg, of toelaat dat enigiemand anders dit doen, tensy die trekkerenjin afgeskakel is, die handrem opgetrek is en die implement heeltemal tot stilstand gekom het nie.
- ⚠ Toeskouers moet aktief ontmoedig word en bedryf van die implement moet onmiddellik gestaak word as enige persoon die werksgebied benader of dit betree.
- ⚠ Die implement moet teen 'n konserwatiewe snelheid bedryf word.

- ⊖ Failure to prevent overloading, excessive speed and impacts during travel will result in structural and mechanical failures not covered under warranty.

### The filling process

The implement should be filled to the specified capacity using clean, uncontaminated, bagged product.

- ⊖ Note that overfilling and resultant overloading will result in mechanical and structural failures not covered under warranty.
- ⊖ Do not transport additional bags of product within or on top of the implement while travelling, as the resultant overloading will result in mechanical and structural failures not covered under warranty.

If mechanical loading is preferred (e.g. by front-end loader), extra care should be taken to prevent solid objects such as stones and solidified materials from entering and contaminating the product. These will cause damage to the implement's agitating and metering mechanism.

- ⊖ It is the responsibility of the operator to prevent solid objects from entering the implement discharge system.
- ⊖ Never use a stick or rod to relieve blockages while the implement's agitator shafts are rotating.
- ⊖ Failure to prevent obstruction of the implement's discharge system will result in damages not covered under warranty.

### The spreading process

It should be noted that the position of the discharge shutter provides control of the discharge rate from the implement. The agitator shafts only promote continuous product flow to the shutter mechanism under gravity.

- ⊖ Note that this product is considered a "drop-type" spreading implement, and application rates (i.e. applied product mass per unit area) are influenced by product flow rate under the influence of gravity, shutter position and forward speed.
- ⊖ Consequently, due to the wide range of available product types, consistencies and flow characteristics, it is the responsibility of the operator to establish and record settings appropriate to required application rates.

The following procedure is recommended for starting the spreading process:

- ✔ Set the shutter control lever to the chosen position and insert the locking pin (Fig. 1-A).
- ✔ Select an appropriate gear on the tractor and begin forward travel.

- ⊖ Oorlading, buitensporige snelhede en impakte sal tot strukturele en meganiese onklaarraking lei wat nie onder die waarborg gedek word nie.

### Die vulproses

Die implement moet met 'n skoon, sakverpakte produk tot die gespesifiseerde kapasiteit gevul word.

- ⊖ Let daarop dat oorvulling en gevolglike oorlading tot meganiese en strukturele onklaarraking sal lei wat nie onder die waarborg gedek word nie.
- ⊖ Addisionele sakke produk moet nie in of bo-op die implement vervoer word nie, aangesien die gevolglike oorlading tot meganiese en strukturele onklaarraking sal lei wat nie onder die waarborg gedek word nie.

As meganiese laai verkies word (bv. met behulp van 'n voorlaaier, tref ekstra voorsorg dat soliede voorwerpe soos klippe en materiale wat hard geword het, nie in die produk beland en dit besmet nie. Sulke voorwerpe sal skade aan die implement se roer- en uitmeetmeganismes aanrig.

- ⊖ Dit is die operateur se verantwoordelikheid om te verhoed dat soliede voorwerpe in die implement se afvoerstelsel beland.
- ⊖ Moet nooit 'n stok of staaf gebruik om blokkasies te verlig terwyl die implement se roerderasse draai nie.
- ⊖ Versuim om obstruksie van die implement se afvoerstelsel te voorkom sal tot skade lei wat nie onder die waarborg gedek word nie.

### Die toedieningsproses

Let daarop dat die posisie van die afvoersluitplaat beheer van die toedieningskoers uit die implement bied. Die roerderasse bevorder slegs produkvloei na die sluitplaatmeganisme onder swaartekrag.

- ⊖ L.W. Hierdie implement word as 'n "valtype"-strooier beskou; toedieningskoerse (d.w.s. produkmasse per oppervlakte-eenheid) word beïnvloed deur produkvloei-koerse onder die invloed van swaartekrag, sluitplaatposisie en vorentoe spoed.
- ⊖ Gevolglik is dit, weens die wye verskeidenheid beskikbare produksoorte, -konsistensies en -vloei-eienskappe, die operateur se verantwoordelikheid om instellings vas te stel en aan te teken wat vir vereiste toedieningskoerse gepas is.

Die volgende prosedure word aanbeveel om die toedieningsproses te begin:

- ✔ Stel die sluitplaatbeheerhefboom op die gekose posisie en steek die sluitpen in (Fig. 1-A).
- ✔ Kies 'n geskikte rat op die trekker en begin vorentoe ry.

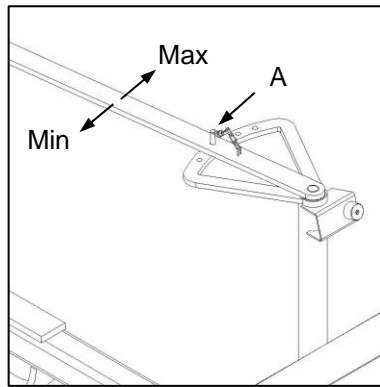


Fig. 1

When adjusting the rate of application, it is recommended that only one of the parameters (shutter position or forward speed) be revised on each occasion.

Wanneer die toedieningskoers verstel word, word aanbeveel dat net een van die parameters (sluitplaatbeheer of vorentoe spoed) telkens hersien word.

The application rate in kg/ha can be established by measuring the volume discharged at a particular shutter setting and forward speed.

Die toedieningskoers in kg/ha kan bepaal word deur die volume te meet wat teen 'n bepaalde sluitplaatstelling en vorentoe spoed uitvloei.

$$\text{Current rate (kg/ha)} = \text{Volume discharged (kg)} / [\text{Working width (m)} \times \text{Distance travelled (m)} \times 10^4]$$

$$\text{Huidige koers (kg/ha)} = \text{Volume toegedien (kg)} / [\text{Werkswydte (m)} \times \text{Afstand gery (m)} \times 10^4]$$

Changes in forward speed will result in a different application rate.

Veranderinge in vorentoe spoed sal die toedieningskoers verander.

$$\text{New rate (kg/ha)} = [\text{Current rate (kg/ha)} \times \text{New speed (km/h)}] / \text{Current speed (km/h)}$$

$$\text{Nuwe koers (kg/ha)} = [\text{Huidige koers (kg/ha)} \times \text{Nuwe spoed (km/h)}] / \text{Huidige spoed (km/h)}$$

### Transportation and storage

The trailed implement (F500 Limespreader) is intended to be trailed between worksites.

- ✔ When trailing the implement on tarmac and other abrasive surfaces, ensure that the implement tyres are properly inflated.
- ✔ Refer to the tyre sidewall markings for the tyre manufacturer's recommendations in this respect.

The implement should be properly prepared for storage.

- ✔ Remove residual product from the implement bin and thoroughly rinse with fresh water while operating the shutter control lever (See elsewhere in this manual – MAINTENANCE.)
- ✔ Lubricate all prescribed areas. (See elsewhere in this manual – MAINTENANCE.)
- ✔ Place the implement on axle stands to prevent tyre deterioration while the implement is standing.

### Vervoer en berging

Die gesleepte implement (F500 Kalkstrooier) is ontwerp om tussen werksterreine te sleep.

- ✔ Wanneer die implement op teer en ander ruwe oppervlakke gesleep word, verseker dat die implement se bande behoorlik styfgepomp is.
- ✔ Verwys na die merke op die buitebandwande vir die bandvervaardiger se aanbevelings in hierdie opsig.

Die implement moet behoorlik voorberei word vir berging.

- ✔ Die binnekant van die vulbak moet deeglik skoon-gemaak en met vars water uitgespoel word terwyl die sluitplaatbeheerhefboom voortdurend beweeg word. (Kyk INSTANDHOUDING in hierdie handleiding.)
- ✔ Ghries alle voorgeskrewe punte. (Kyk elders in hierdie handleiding - INSTANDHOUDING.)
- ✔ Plaas die implement op asblokke om buiteband-agteruitgang tydens staantyd te verhoed.

## MAINTENANCE

### Routine maintenance

- ⚠ Do not perform maintenance or any other work on the implement unless the tractor engine has been shut off, the handbrake applied and the key removed from the ignition.
- ⚠ Do not perform maintenance or any other work on the implement while it is suspended only on the tractor hitch, or without suitable additional support for the implement.
- ⚠ Use only original and approved Falcon replacement parts and lubricants. Refer to the parts information provided in this manual.

Maintenance should be carried out before and after each use and in accordance with the schedules provided in this chapter.

- ⊖ Bolted connections should be checked for tightness with reference to Bolt Torque Specifications (Table 1).

### ➤ BEFORE each use

To be carried out at least daily in periods of continuous use. Otherwise before each occasion that the implement is used. Extra care and attention should be given to implements which may have been unused for prolonged periods (longer than 1 month).

- ✔ Check all fasteners for tightness, including wheel nuts (Fig. 1-A), wheel bearing mountings (Fig. 2-A) and linkage bolts (Fig. 2-B).

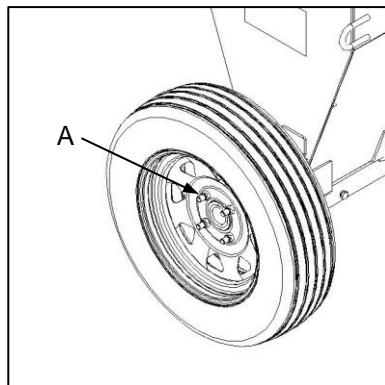


Fig. 1

- ✔ Inspect all mounting pins, chains, shackles and other load-bearing components for signs of wear. Check that all secondary securing mechanisms such as linchpins, split-pins and clips are in place.
- ✔ Run the implement up to operating speed and conduct visual and audible checks for excessive vibration and noise.

## INSTANDHOUDING

### Roetine-instandhouding

- ⚠ Moenie instandhouding- of enige ander werk aan die implement doen tensy die trekkerenjin afgeskakel, die handrem opgetrek en die sleutel uit die aansitter verwyder is nie.
- ⚠ Moenie instandhouding- of enige ander werk aan die implement doen terwyl dit net aan die trekker se haak hang, of sonder geskikte ekstra stutte vir die implement nie.
- ⚠ Gebruik slegs oorspronklike en goedgekeurde Falcon- vervangingsonderdele en smeermiddels. Verwys na die onderdele-inligting in hierdie handleiding.

Instandhouding moet telkens voor en na gebruik gedoen word, en in ooreenstemming met die skedules wat in hierdie hoofstuk vervat is.

- ⊖ Verseker dat koppelboute in ooreenstemming met die boutwringkragspesifikasiekaart vas is (Tabel 1).

### ➤ VOOR elke gebruik

Moet minstens daaglik uitgevoer word in tye van aanhoudende gebruik, of anders elke keer voor die implement gebruik word. Gee ekstra sorg en aandag aan implemente wat dalk vir lang tydperke (meer as 'n maand) nie gebruik is nie.

- ✔ Verseker dat alle hegstukke vas is, insluitend wielmoere (Fig. 1-A), wielkoeëllaermonterings (Fig. 2-A) en skakelboute (Fig. 2-B).

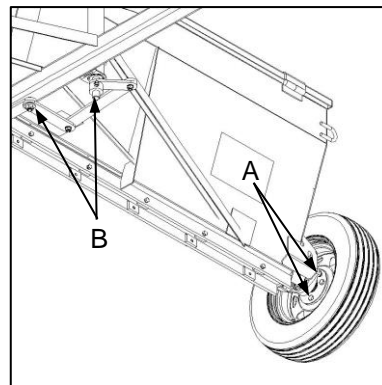


Fig. 2

- ✔ Gaan alle monterperne, kettings, penskakels en ander lasdraende komponente na vir tekens van slytasie. Verseker dat alle sekondêre hegmeganismes soos lunsperne, splitperne en knippe in posisie is.
- ✔ Versnel die implement tot werkspoed en voer visuele en gehoorinspeksies uit vir oormatige vibrasie en geraas.

- ⊖ Causes of excessive vibration and noise must be identified and eliminated immediately to prevent consequential structural or mechanical failure not covered under warranty.

#### ➤ AFTER each use

To be carried out at least every 40 hours in periods of continuous use. Otherwise after each occasion that the implement is used, or before long-term storage (longer than 1 month).

- ✔ Thoroughly inspect the implement for any signs of damage incurred during use. Note these for attention and repair before the next use.
- ✔ Remove residual product from the implement, particularly the inside surfaces of the load bin.
- ✔ Where pressurised cleaning is undertaken, care must be taken in areas around seals, breathers and lubrication points.
- ✔ Continually operate the shutter control lever during rinsing to ensure that trapped debris is flushed from the mechanism.
- ✔ Ensure that all safety and warning decals are in place and in a legible condition.
- ✔ Store the implement in a clean, dry, weather-protected area.

#### Agitator shafts

Agitator shafts and support bushes should be regularly inspected for signs of damage or wear.

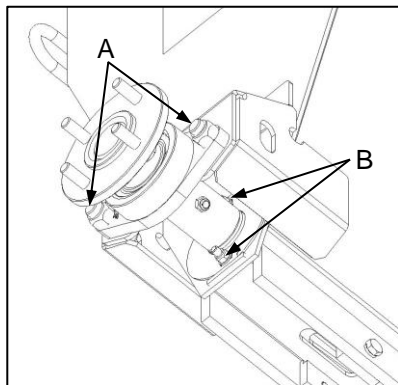


Fig. 3

To replace the agitator shafts and/or support bushes.

- ✔ Remove the wheel by removing the wheel nuts (Fig. 1-A).
- ✔ Remove the wheel bearing mounting bolts (Fig. 3-A) and the shaft cover plates (Fig. 3-B).
- ✔ The shafts may be extracted through the aperture provided (Fig. 4-A), giving access to the support bushes for inspection or replacement.

- ⊖ Oorsake van oormatige vibrasie en geraas moet geïdentifiseer en onmiddellik uitgeskakel word om gevolglike strukturele of meganiese onklaarraking te verhoed wat nie onder die waarborg gedek word nie.

#### ➤ NA elke gebruik

Moet minstens elke 40 uur in tye van aanhoudende gebruik uitgevoer word, of anders elke keer nadat die implement gebruik is, of voor langtermynberging (meer as 'n maand).

- ✔ Gaan die implement deeglik na vir enige tekens van moontlike skade tydens gebruik. Merk dit aan vir aandag en herstel voor die volgende gebruik.
- ✔ Verwyder produkreste van die implement, veral oppervlakke binne-in die laaibak.
- ✔ Waar drukskoonmaak aangewend word, wees veral versigtig rondom seëls, luggate en ghriespunte.
- ✔ Beweeg die sluitplaathefboom voortdurend om te verseker dat vasgevangde vuiligheid uit die meganisme gespoel word.
- ✔ Verseker dat alle veiligheid- en waarskuwingsplakkers in posisie en in leesbare toestand is.
- ✔ Berg die implement in 'n skoon, droë, weerbestande plek.

#### Roerderasse

Roerderasse en steunbusse moet gereeld nagegaan word vir tekens van skade of slytasie.

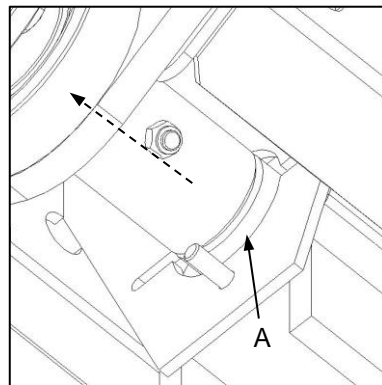


Fig. 4

Om die roerderasse en/of steunbusse te vervang.

- ✔ Verwyder die wiel deur die wielmoere te verwyder (Fig. 1-A).
- ✔ Verwyder die wielkoeëlaermonteerboutte (Fig. 3-A) en die as-dekplate (Fig. 3-B).
- ✔ Verwyder die asse deur die gat (Fig. 4-A), wat toegang tot die steunbusse sal bied vir inspeksie of vervanging.

**Table/Tabel 1**

Bolt Torque Specifications (N.m) / Boutwringkragspesifikasies (N.m)

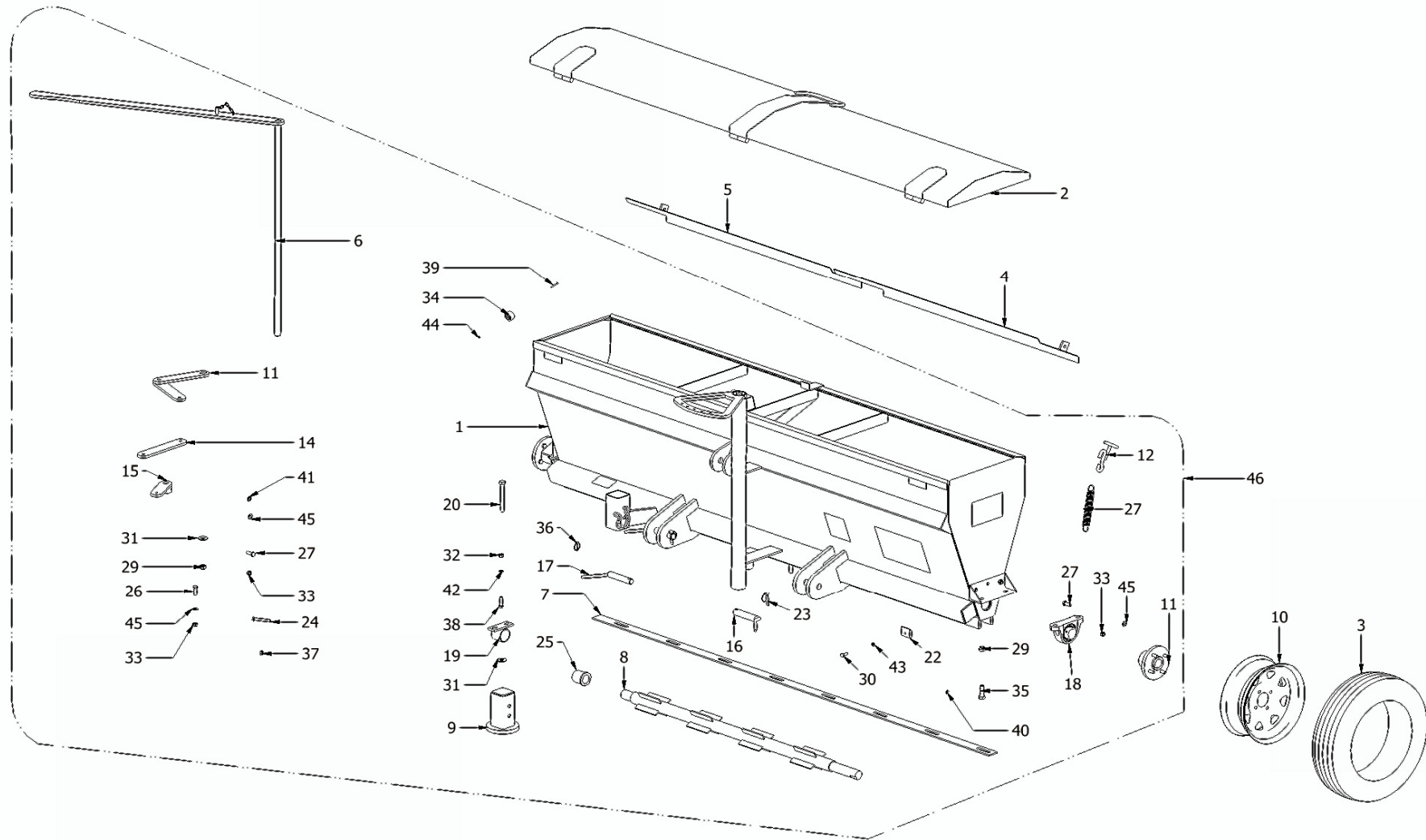
Class/Klas	4.6		8.8		10.9		12.9	
	Wet/Nat	Dry/Droog	Wet/Nat	Dry/Droog	Wet/Nat	Dry/Droog	Wet/Nat	Dry/Droog
M6	4,8	6	9	11	13	17	15	19
M8	12	15	22	28	32	40	37	47
M10	23	29	43	55	63	80	75	95
M12	40	50	75	95	110	140	130	165
M14	63	80	120	150	175	225	205	260
M16	100	125	190	240	275	350	320	400
M18	135	175	260	330	375	475	440	560
M20	190	240	375	475	530	675	625	800
M22	260	330	510	650	725	925	850	1 075
M24	330	425	650	825	925	1 150	1 075	1 350
M27	490	625	950	1 200	1 350	1 700	1 600	2 000
M30	675	850	1 300	1 650	1 850	2 300	2 150	2 700
M33	800	1 150	1 750	2 200	2 500	3 150	2 900	3 700
M36	1 150	1 450	2 250	2 850	3 200	4 050	3 750	4 750

**Table/Tabel 2**

Lubrication requirements / Smeringvereistes

Application/Toepassing	Type/Tipe	Process/Proses	Interval	Products/Produkte	
<b>Gearboxes</b> Ratkaste	<b>Bevel gearboxes</b> Keëlratkaste	<b>Oiled/Geolie</b>	<b>Replace/Vervang</b>	12 m	<b>Gear oil, Fuchs, Renep 1000</b> Ratkasolie, Fuchs, Renep 1000
			<b>Check/Gaan na</b>	1 d	
	<b>Splitter gearboxes</b> Verdeelratkaste	<b>Oiled/Geolie</b>	<b>Replace/Vervang</b>	12 m	
			<b>Check/Gaan na</b>	1 d	
<b>PTO driveshafts</b> Kragaftakkerasse	<b>UV joints</b> Kruiskoppelings	<b>Greased/Geghries</b>	<b>Refresh/Vul aan</b>	10 h/u	<b>Grease, Universal, Moly #2</b> Ghries, Algemeen, Moly #2
	<b>CV joints</b> KS-koppelings	<b>Greased/Geghries</b>	<b>Refresh/Vul aan</b>	10 h/u	
	<b>Telescopic tubes</b> Teleskopiese buise	<b>Greased/Geghries</b>	<b>Refresh/Vul aan</b>	20 h/u	
<b>Auxiliary drives</b> Hulpaandrywings	<b>Intermediate shafts</b> Tussenasse	<b>Greased/Geghries</b>	<b>Refresh/Vul aan</b>	10 h/u	<b>Grease, Fuchs, HT Lithium M2</b> Ghries, Fuchs, HT Lithium M2
	<b>Spindles</b> Spille	<b>Greased/Geghries</b>	<b>Replace/Vervang</b>	12 m	
			<b>Refresh/Vul aan</b>	10 h/u	
	<b>Bearing housings</b> Koeëllaeromhulsels	<b>Greased/Geghries</b>	<b>Replace/Vervang</b>	3 m	
<b>Refresh/Vul aan</b>			10 h/u		
<b>Bearing units</b> Koeëllaereenhede	<b>Greased/Geghries</b>	<b>Refresh/Vul aan</b>	20 h/u	<b>Grease, Universal, Moly #2</b> Ghries, Algemeen, Moly #2	
<b>Wheel bearings</b> Wielkoeëllaers	<b>Greased/Geghries</b>	<b>Refresh/Vul aan</b>	1 w		
<b>Pivot points</b> Spilpunte	<b>Pins and bushes</b> Penne en busse	<b>Greased/Geghries</b>	<b>Refresh/Vul aan</b>	10 h/u	<b>Machine oil, Universal</b> Masjienolie, Algemeen
		<b>Oiled/Geolie</b>	<b>Refresh/Vul aan</b>	10 h/u	
	<b>Ball joints</b> Koeëlgewrigte	<b>Greased/Geghries</b>	<b>Refresh/Vul aan</b>	10 h/u	<b>Grease, Universal, Moly #2</b> Ghries, Algemeen, Moly #2
		<b>Oiled/Geolie</b>	<b>Refresh/Vul aan</b>	10 h/u	
<b>Adjusters/Levers</b> Verstellers/Hefbome	<b>Threaded rods/ Lead screws</b> Skroefdraadstawe/ Leiskroewe	<b>Greased/Geghries</b>	<b>Refresh/Vul aan</b>	20 h/u	<b>Grease, Universal, Moly #2</b> Ghries, Algemeen, Moly #2
		<b>Oiled/Geolie</b>	<b>Refresh/Vul aan</b>	20 h/u	

F400 Limespreeder  
A0064

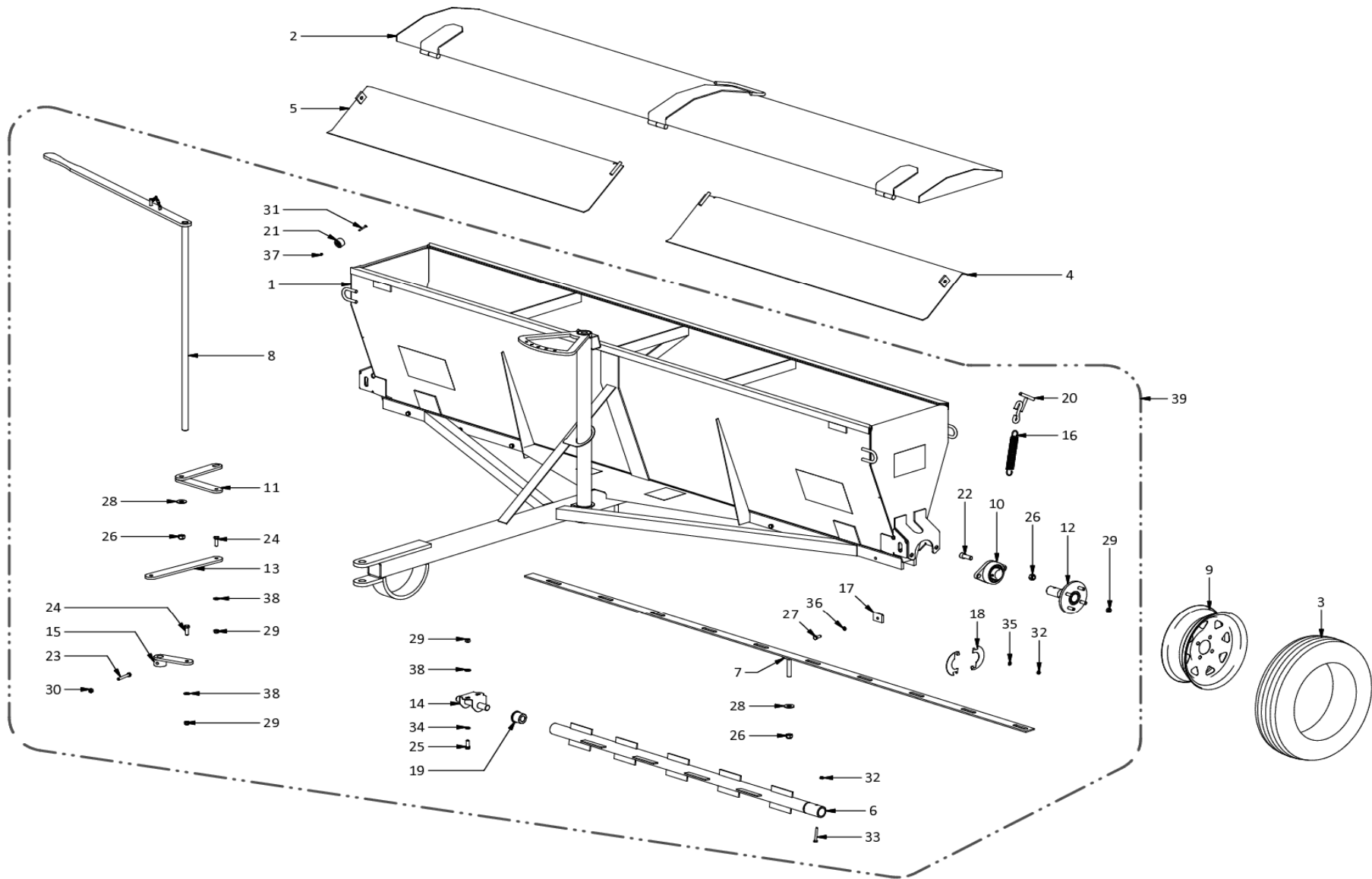


**F400 Limespreader  
A0064**

Item	Part No.	Description	Qty	Item	Part No.	Description	Qty
1	H3515	Painted Hull F3000 Limespreader 2.4m	1	41	M91213	Washer Spring M12 Galv	2
2	H5369	Top Cover A0064	1	42	M81002	Washer Flat M10 Galv	4
3	M3521	Tyre 195R14C 8ply import	2	43	M91002	Washer Spring M10 Galv	16
4	H5371	Inside Deflector Plate LHS	1	44	M30506	Nut Nyloc M5	1
5	H5372	Inside Deflector Plate RHS	1	45	M81202	Washer Flat M12 Galv	8
6	H3534	Lime Flow Handle	1	46	H3555	Hull Assembly A0064	1
7	H5373	Baffle Plate 50x3000x6 Parallel Slots	1	47	M3176	Decal Bird Falcon Meduim	1
8	H3516	Shafts Limespreader 2.4m (Incl Paddels)	2	48	M3175	Decal PROUD TO BE SOUTH AFRICAN	1
9	H3545	Jack Stand	1	49	M3169	Decal Bird FALCON Small	2
10	M3520	Rim White 6Jx14" 4/100	2	50	M3161	Decal F400 Limespreader	1
11	H3507	Hub Unit Limspreader	2	51	M3003	Serial plate Metal FALCON	1
12	H3535	Lime Flow L Plate	1				
13	H3540	Side Bearing Bracket	2				
14	M5370	Lime Flow Plate	1				
15	H3543	Lime Flow Handle Lock	1				
16	H7115	Pin Btm link Cat2 125mm	2				
17	H0634	Pin Top link Cat 2-125mm	1				
18	M3504	Bearing UCP 208	2				
19	H3508	Bush Steel LimSpreader	2				
20	M416140	Bolt M16x140 HT Galv	1				
21	M3512	Spring	1				
22	H3517	Guide block	16				
23	FLP11	Lynchpin 11mm	3				
24	M41070	Bolt M10x70 HT Galv	1				
25	H3509	Bushes Nylon Limespreader	2				
26	M41235	Bolt M12x35 HT Galv	2				
27	M41230	Bolt M12x30HT Galv	8				
28	H3539	Spring Handle	1				
29	M61616	Nut Nyloc M16 Galv	6				
30	M41025	Bolt M10x25HT Galv	16				
31	M81603	Washer M16x40x3 Galv	6				
32	M31209	Nut M12 Galv	4				
33	M61209	Nut Nyloc M12 Galv	16				
34	M3519	Stopper Rubber	1				
35	M41650	Bolt M16x50 HT Galv	4				
36	FLP4	Lynchpin 4mm	1				
37	M31007	Nut M10 Galv	1				
38	M41240	Bolt M12x40 HT Galv	4				
39	M10530	Bolt M5x30	1				
40	M10039	Grease nipple 1/8inch	2				



F500 Trailed Limespreeder  
A0065



**F500 Trailed Limespreader  
A0065**

Item	Part No.	Description	Qty	Item	Part No.	Description	Qty
1	H3500	Hull	1	41	M3162	Decal F500 Limespreader	1
2	H3536	Top Cover	1	42	M3176	Decal Brid FALCON Meduim	2
3	M3521	Tyre 195R14C 8ply	2	43	M3175	Decal PROUD TO BE SOUTH AFRICAN	1
4	H3537	Deflector LH	1	44	M3169	Decal Bird FALCON Small	2
5	H3538	Deflector RH	1				
6	H3553	Agitator shaft A0065	2				
7	H3542	Baffle Plate 50x3000x6 Parallel Slots	1				
8	H3534	Handle Flow control	1				
9	M3520	Rim White 6Jx14inch 4/100	2				
10	M3564	Bearing FYTB40	2				
11	H3535	Linkage	1				
12	H3554	Wheel hub F500	2				
13	H3541	Linkage	1				
14	H3551	Pedestal Centre	1				
15	H3543	Linkage	1				
16	M3512	Spring	1				
17	H3517	Guide block	20				
18	M3562	Cover Agitator shaft	4				
19	H3552	Bush 25x52x39.5 Nylon	2				
20	H3539	Handle	1				
21	M3519	Stopper Rubber	1				
22	M51640	Cap screw M16x40	4				
23	M41070	Bolt M10x70HT	1				
24	M41235	Bolt M12x35HT	2				
25	M41230	Bolt M12x30HT	2				
26	M61616	Nut Nyloc M16	6				
27	M41025	Bolt M10x25HT	20				
28	M81603	Washer M16x40x3	2				
29	M61209	Nut Nyloc M12	12				
30	M31007	Nut M10	1				
31	M10530	Bolt M5x30	1				
32	M60809	Nut Nyloc M8	6				
33	M10860	Bolt M8x60	2				
34	M81002	Washer Flat M10	2				
35	M80803	Washer Flat M8	4				
36	M91002	Washer Spring M10	20				
37	M30506	Nut Nyloc M5	1				
38	M81202	Washer Flat M12	4				
39	H3550	Hull assembly A0065	1				
40	M3003	Serial plate Metal FALCON	1				